

**DESIGN APPROACH**

The proposed memorial plaza is based upon a design generated by the SUNY Oswego Class of 1989. Traditional materials and a symmetrical form lend themselves to a formal memorial space that is visible and accessible from existing campus walkways. The circular plaza is inward-focused with a central sculptural element dedicated to the memory of classmates lost in the tragedies of the Lockerbie Bombing and 9/11. Sugar maples, the state tree of New York, are proposed around the perimeter of the plaza to provide the stately form, mature shade, and fall color to represent the locality of 9/11, while groundcover plant material would incorporate heather and thistle to represent the locality where Pan Am Flight 103 crashed in Lockerbie, Scotland. Corten steel elements are incorporated into the design to be evocative of the raw elements that survived those tragedies, and to symbolize hope and resilience.

**IMAGE EXAMPLES**



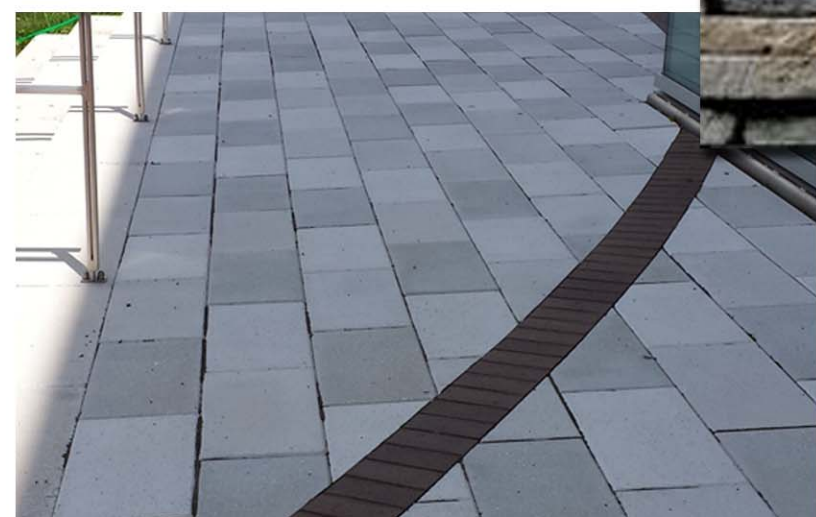
Sugar maple shade tree plantings represent the State of New York



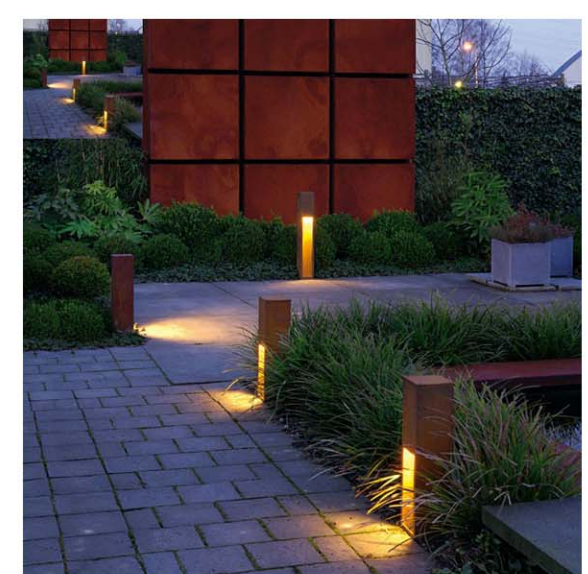
Corten memorial plaques for each of four classmates installed on central memorial sculpture



Stone seat wall with decorative corten steel lettering: "Peace - Free & Easy"



12"x 24" Pavers



Ambient lighting incorporated with bollards, uplighting, and fixtures integral with seat wall

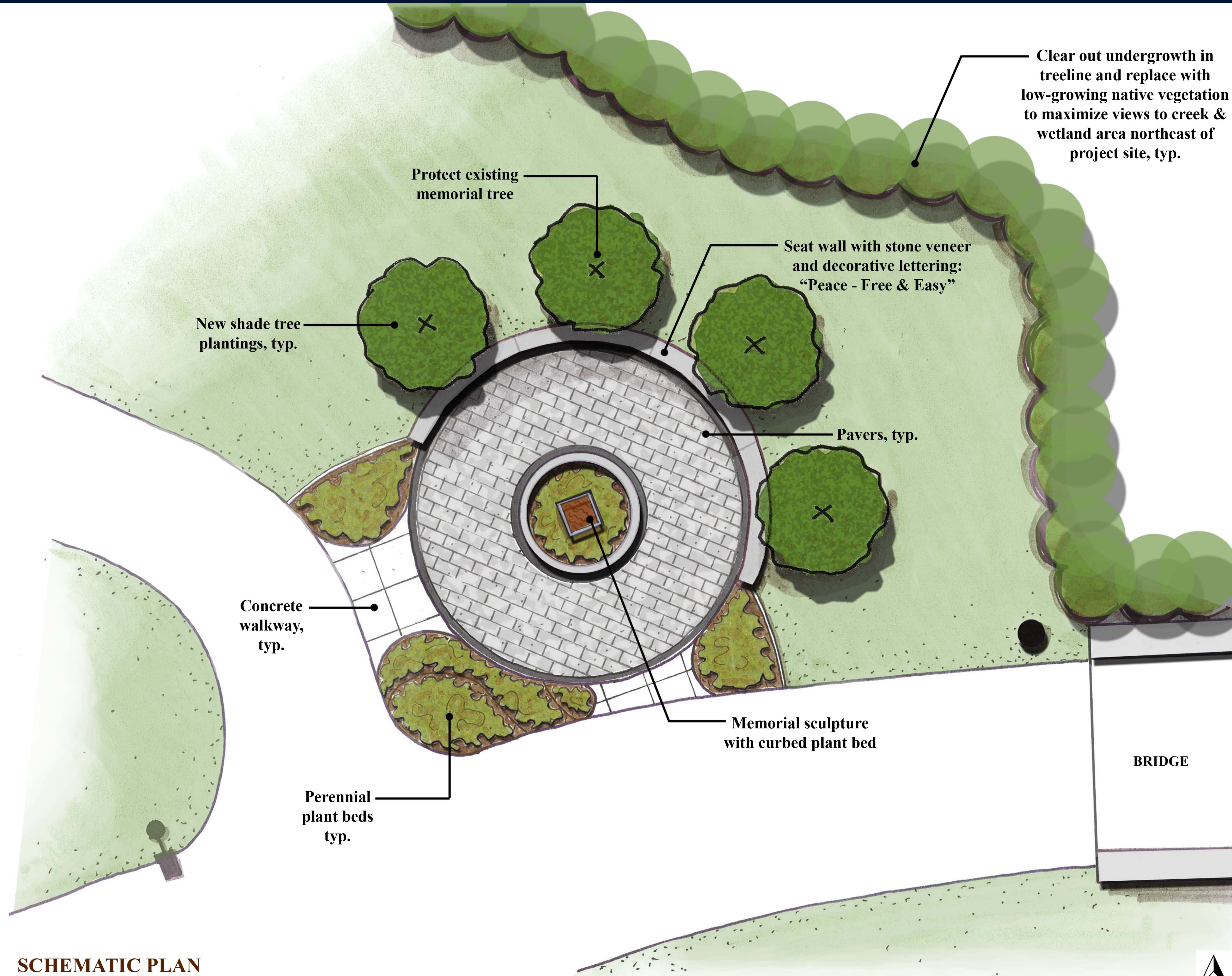


Vegetation native to Scotland, including thistle and heather



**SCHEMATIC PLAN**

Scale: 1/4" = 1'-0"



Clear out undergrowth in treeline and replace with low-growing native vegetation to maximize views to creek & wetland area northeast of project site, typ.

Protect existing memorial tree

New shade tree plantings, typ.

Seat wall with stone veneer and decorative lettering: "Peace - Free & Easy"

Pavers, typ.

Concrete walkway, typ.

Memorial sculpture with curbed plant bed

Perennial plant beds typ.

BRIDGE



*Peace - Free & Easy*